

Specialty Wire & Cord Sets Inc.



One Gallagher Rd. | Hamden CT 06517
203.498.2932 phone | 203.498.1602 fax
specialtywire.com web



*Specialty Wire & Cord Sets
Owners Lee and Lynn Campo*

About Us

Our Mission

To become your leading supplier of quality retractile cords and custom made wire and cable products while maintaining a philosophy that no job is too small to be given our full consideration.

History

Specialty Wire & Cord Sets Inc. (SWC) was founded in 1990 with the idea that the company can succeed by making short runs of wire and coiled cords. Since then, SWC has become a preeminent manufacturer of retractile cords, supplying a diverse group of industries. This list would include Transportation, Medical and Dental Equipment, Aircraft Ground Support, Robotics, Hand-held Remote Control Devices, Retail Displays, Overhead Doors, Gaming Equipment, Machine Tools, Security Devices and many more.

Customer Service

Specialty Wire & Cord Sets Inc. has a policy that all incoming calls are handled directly as we want our customer to talk to a person, not a machine. SWC believes in a quality product and we strive to give our customer the best product for the money. Some customers have acknowledged how great it is to work with SWC. The staff is very knowledgeable of the product, very friendly and helpful.

We have many years experience in the wire industry, and coiled cords (also called curly cords) in particular. Each customer will receive prompt response and quotes are usually provided within one business day. SWC stocks many cords which can be shipped same day. Our retractable cords range from 1 inch to 20 feet with a maximum extension of 100 feet. Most of our wire is UL approved or CSA certified and all of our wire is RoHS compliant.



*Lou Highkin
Customer Sales and Service*



*Kathy Krempa
Office Manager and Billing*



*John LeBlanc
Plant Manager & Quality Control*

About Our Products

Coiled Cords, Wire & Cable Ready-Made In Stock and Custom

Specialty Wire & Cord Sets Inc. is a vertically integrated manufacturer of custom cable, coil cords and cable assemblies. We are a worldwide, RoHS compliant and ISO Certified, cable and cable assembly manufacturer of advanced power and signal transmission cable solutions.

Specialty Wire & Cord Sets Inc. is a lean manufacturer, reducing cycle time and delivering superior cost-competitive cables and cable assemblies faster than anyone else in the industry.

Specialty Wire In Stock and Custom Cables and Cords

- Power cords are available with low and high conductor counts
- Communication / Electronic Cords can be made shielded and non-shielded
- Category 5 (Cat 5) Coil Cords manufactured on site
- Coiled cords, wire and cable are available with Thermoset Rubber, Polyurethane, PVC, TPE and Hytrel coating.
- All materials are RoHS compliant
- Short runs are our specialty
- Competitive pricing
- Fast delivery
- Work closely with distributors
- Blind and drop shipments processed at no extra charge
- Low surcharge on small orders
- For wire in stock, lead time is 2-3 business days



Specialty Wire & Cord Sets Manufacturing Team



Same Day Shipping For In-Stock Orders Before 2 PM EST

POWER CORDS - Thermoset Rubber (In Stock) RoHS Compliant

Retracted Lengths 48", 36", 24", 12" Extended Lengths 1:5 Ratio: 90deg C UL/CSA

When rugged duty in an industrial environment is a requirement, choose thermoset rubber retractile cords.

Available as light duty SVO types, medium duty SJOOW types and heavy duty SOOW types.

P/N	Conds	Strand	Volts	AMP	Cable OD**	Coil OD**	Weight per cord (lbs)			
							12"	24"	36"	48"
18 AWG TYPE SVO UL/CSA 90deg C RoHS										
R1820	2	41/34	300	10	0.26	0.895	0.3	0.6	0.9	1.0
R1830	3	41/34	300	10/7	0.275	0.93	0.4	0.7	1.1	1.6
18 AWG TYPE SJ0OW UL/CSA 90deg C RoHS										
R1821	2	41/34	300	10	0.32	1.14	0.5	0.9	1.3	1.6
R1831	3	41/34	300	10/7	0.35	1.21	0.7	1.0	1.6	2.2
R1841	4	41/34	300	7/5.6	0.38	1.385	1	1.7	2.5	3.2
R1851	5	41/34	300	5.6	0.44	1.6	1.1	1.9	2.9	3.75
18AWG TYPE SOOW UL/CSA 90deg C RoHS										
R1832	3	41/34	600	10/7	0.385	1.4	1	1.7	2.5	3.2
R1842	4	41/34	600	7/5.6	0.415	1.455	1.2	2.2	3.3	4
R18102	10	41/34	600	5.6	.06	2.05	2.2	4.2	6.1	8
18 AWG TYPE AWM UL/CSA 90deg C RoHS										
R187A	7	41/34	300	4.9	0.5	1.72	1.4	2.6	3.9	5
R1815A	15	41/34	300	4.9	0.57	2	2.1	3.6	5.1	7.0
16 AWG TYPE SJOOW UL/CSA 90deg C RoHS										
R1621	2	65/34	300	13	0.36	1.345	0.7	1.1	1.7	2.2
R1631	3	65/34	300	13/10	0.385	1.4	0.8	1.4	2.1	3.0
R1641	4	65/34	300	10/8	0.42	1.465	1.1	2.2	3.2	4
16 AWG TYPE SOOW UL/CSA 90deg C RoHS										
R1632	3	65/34	600	13/10	0.415	1.45	0.9	1.5	2.3	3.3
R1642	4	65/34	600	10/8	0.445	1.61	1.2	1.8	3.4	3.7
R1652	5	65/34	600	8	0.525	1.9	1.5	2.7	4.0	5.3
R1662	6	65/34	600	8	0.575	2	1.7	3.2	4.4	6.0
R1672	7	65/34	600	7	0.575	2	2.2	3.6	5.2	7.1
R1682	8	65/34	600	7	0.605	2.07	2.0	3.3	4.8	6.4
14 AWG TYPE SOOW UL/CSA 90deg C RoHS										
R1432	3	41/30	600	18/15	0.545	1.95	1.7	3.0	4.4	5.9
R1442	4	41/30	600	15/12	0.57	2	1.9	3.2	4.7	6.3
R1472	7	41/30	600	10	0.7	2.45	3.0	5.0	7.3	8.6
12 AWG TYPE SOOW UL/CSA 90deg C RoHS										
R1232	3	65/30	600	25/20	0.63	2.31	2.5	4.3	6.3	8.1
R1242	4	65/30	600	20/16	0.68	2.41	2.7	4.5	6.5	8.7
R1272	7	65/30	600	16	0.765	2.85	3.4	6.4	9.1	12.8
10 AWG TYPE SOOW UL/CSA 90deg C RoHS										
R1042	4	104/30	600	20	0.715	2.48	3.3	5.4	8.4	11.4

203.498.2932 phone | 203.498.1602 fax | specialtywire.com web

**Inches — Dimensions Are Nominal

Soft Bare Copper - CPE Jacket - Black

Tangent Leads – Cut Blunt – 12” long on 12” retracted lengths,
6” long on others unless otherwise specified.

Options – (Available on minimal orders)

- Special retracted lengths – 240” maximum – 100 ft. extended maximum
- Special leads lengths
- NEMA 5-15P Plug (25 pcs minimum)
- Jacket removal and stripping of conductors
- For wire in stock, lead time is 2-3 business days

See Power Cord Color Chart #2 INSIDE BACK COVER

Shipping

Specialty Wire Staff have the expertise to ship cords all over the globe, using the customer's preferred shipper. Also, we can drop ship to your customer's address using your documentation and plain boxes at no extra charge. All shipments are FOB Hamden CT 06517.

Please note: A \$4.00 surcharge will be applied on orders less than \$50.00.



Same Day Shipping For In-Stock Orders Before 2 PM EST

POWER CORDS - TPE (In Stock) RoHS Compliant

Retracted Lengths 48", 36", 24", 12" Extended Lengths 1:5 Ratio 105deg C UL/CSA

Coiled cords made with TPE, a thermoplastic elastomer with rubber like qualities, offer good mid-range performance at reasonable cost and are the cord of choice for outdoor use in sub-zero temperatures. Please call for availability of TPE cords requiring higher conductor counts or larger wire gauge sizes.

P/N	Conds	Strand	Volts	AMP	Cable OD**	Coil OD**	Weight per cord (lbs)			
							12"	24"	36"	48"
18 AWG TYPE SVEOW UL/CSA 105deg C RoHS										
T1820	2	41/34	300	10	0.255	0.875	0.36	0.6	0.75	1.1
T1830	3	41/34	300	10/7	0.27	0.97	0.4	0.65	0.85	1.2
18 AWG TYPE SJEOW UL/CSA 105deg C RoHS										
T1821	2	41/34	300	10	0.3	1.01	0.45	0.7	0.85	1.35
T1831	3	41/34	300	10/7	0.33	1.16	0.55	0.8	1.1	1.5
T1841	4	41/34	300	7/5.6	0.355	1.35	0.65	0.9	1.4	1.8
16 AWG TYPE SJEOW UL/CSA 105deg C RoHS										
T1621	2	65/34	300	13	0.315	1.14	0.55	0.9	1.3	1.6
T1631	3	65/34	300	13/10	0.35	1.32	0.7	1.2	1.4	1.7
T1641	4	65/34	300	10/8	0.41	1.45	0.95	1.5	1.7	2.8
16 AWG TYPE SEOW UL/CSA 105deg C RoHS										
T1642	4	65/34	600	10/8	0.42	1.5	1.1	1.7	1.85	2.9
14 AWG TYPE SJEOW UL/CSA 105deg C RoHS										
T1421	2	41/30	300	15	0.345	1.32	1.1	1.7	1.85	2.9
T1431	3	41/30	300	15	0.37	1.37	1.2	1.9	2.7	3.6
14 AWG TYPE SEOW UL/CSA 105deg C RoHS										
T1432	3	41/30	600	18/15	0.53	1.95	1.7	3.3	5.1	6.2
T1442	4	41/30	600	15/12	0.575	2	2	3.5	5.2	6.7
12 AWG TYPE SJEOW UL/CSA 105deg C RoHS										
T1231	3	65/30	300	25/20	0.44	1.6	1.25	2.5	3.75	4.5
12 AWG TYPE SEOW UL/CSA 105deg C RoHS										
T1232	3	65/30	600	25/20	0.6	2.25	1.8	3.5	5.5	7.2
T1242	4	65/30	600	20/16	0.645	2.34	2.2	4.3	6.7	8.5

**Inches — Dimensions Are Nominal

See Power Cord Color Chart #2 INSIDE BACK COVER

Soft Bare Copper — TPE Insulation — TPE Jacket — Black

Tangent Leads — Cut Blunt — 12" long on 12" retracted lengths,
6" long on others unless otherwise specified.

Options Available:

- Special retracted lengths — 240" retracted maximum — 100 ft extended maximum
- Special lead lengths
- NEMA 5-15P Plug (25 pcs minimum)
- Jacket removal and stripping of conductors

POWER CORDS - PVC (In Stock) RoHS Compliant

Retracted Lengths 48", 36", 24", 12" Extended Lengths 1:5 Ratio 105deg C UL/CSA

A low cost alternative to other types of power cords in less demanding applications. When appearance counts PVC curly cords are winners. They offer glossy finishes in a limitless range of colors when made on a custom basis.

P/N	Conds	Strand	Volts	AMP	Cable OD**	Coil OD**	Weight per cord (lbs)			
							12"	24"	36"	48"
18 AWG TYPE SVTO UL/CSA 105deg C RoHS Black										
V1820	2	41/34	300	10	0.255	0.875	0.36	0.6	0.75	1.1
V1830	3	41/34	300	10/7	0.27	0.97	0.4	0.65	0.85	1.2
18 AWG TYPE SJTOW UL/CSA 105deg C RoHS Black										
V1821	2	41/34	300	10	0.3	1.01	0.45	0.7	0.85	1.35
V1831	3	41/34	300	10/7	0.33	1.16	0.55	0.8	1.1	1.5
V1841	4	41/34	300	7/5.6	0.355	1.35	0.65	0.9	1.4	1.8
16 AWG TYPE SJTOW UL/CSA 105deg C RoHS Black										
V1621	2	65/34	300	13	0.315	1.14	0.55	0.9	1.3	1.6
V1631	3	65/34	300	13/10	0.35	1.32	0.7	1.2	1.4	1.7
V1641	4	65/34	300	10/8	0.41	1.45	0.95	1.5	1.7	2.8
14 AWG TYPE SJTOW UL/CSA 105deg C RoHS Black										
V1431	3	41/30	300	18/15	0.37	1.37	1.2	1.9	2.7	3.6
12 AWG TYPE SJTOW UL/CSA 105deg C RoHS Black										
V1231	3	65/30	300	25/20	0.44	1.6	1.25	2.5	3.75	4.5

**Inches — Dimensions Are Nominal

See Power Cord Color Chart #2 INSIDE BACK COVER

Soft Bare Copper — PVC Insulation — PVC Jacket — Black

Options Available:

- Special retracted lengths — 240" retracted maximum
— 100 ft extended maximum
- Special lead lengths
- NEMA 5-15P Plug (25 pcs minimum)
- Jacket removal and stripping of conductors
- White jackets or other colors (made to order)
- For wire in stock, lead time is 2-3 business days



Same Day Shipping For In-Stock Orders Before 2 PM EST

COMMUNICATION/ELECTRONIC CORDS - PVC - 23 Gauge (In Stock) RoHS Compliant

Retracted Lengths 48", 36", 24", 12" Extended Lengths 1:5 Ratio 80deg C UL

PVC has proven over many years to be a highly suitable material in the manufacture of retractable cords based on its durability and its ability to offer good performance at reasonable cost where power requirements are low to moderate. Its glossy finish is suitable in many applications and if required it can be made in many colors other than black. Included in this group, to name just a few, are cords suited for use in test instruments, medical equipment, barcode readers, hand-held controllers and photographic equipment. PVC cords can be made to UL AWM style 2464 rated at 80 deg 300volts. Please call when there is a requirement for conductor counts other than those shown here.

P/N	Conds	Strand	Volts	AMP	Cable OD**	Coil OD**	Weight per cord (lbs)			
							12"	24"	36"	48"
23 AWG 21/36TC BLACK PVC JACKET UL 2464 80deg C RoHS										
V232P	2	21/36	300	1	0.18	0.61	0.25	0.37	0.55	0.7
V233P	3	21/36	300	1	0.19	0.69	0.27	0.45	0.65	0.85
V234P	4	21/36	300	1	0.2	0.71	0.31	0.49	0.72	0.91
V235P	5	21/36	300	1	0.22	0.75	0.35	0.58	0.82	0.98
V236P	6	21/36	300	1	0.23	0.78	0.39	0.6	0.89	1.27
V237P	7	21/36	300	1	0.23	0.78	0.4	0.61	0.9	1.29
V238P	8	21/36	300	1	0.25	0.87	0.45	0.78	1.4	1.8
V2310P	10	21/36	300	1	0.28	0.99	0.59	1.03	1.6	2.4
V2312P	12	21/36	300	1	0.29	1.1	0.7	1.17	1.85	2.6
V2315P	15	21/36	300	1	0.32	1.3	0.83	1.4	2.15	2.8

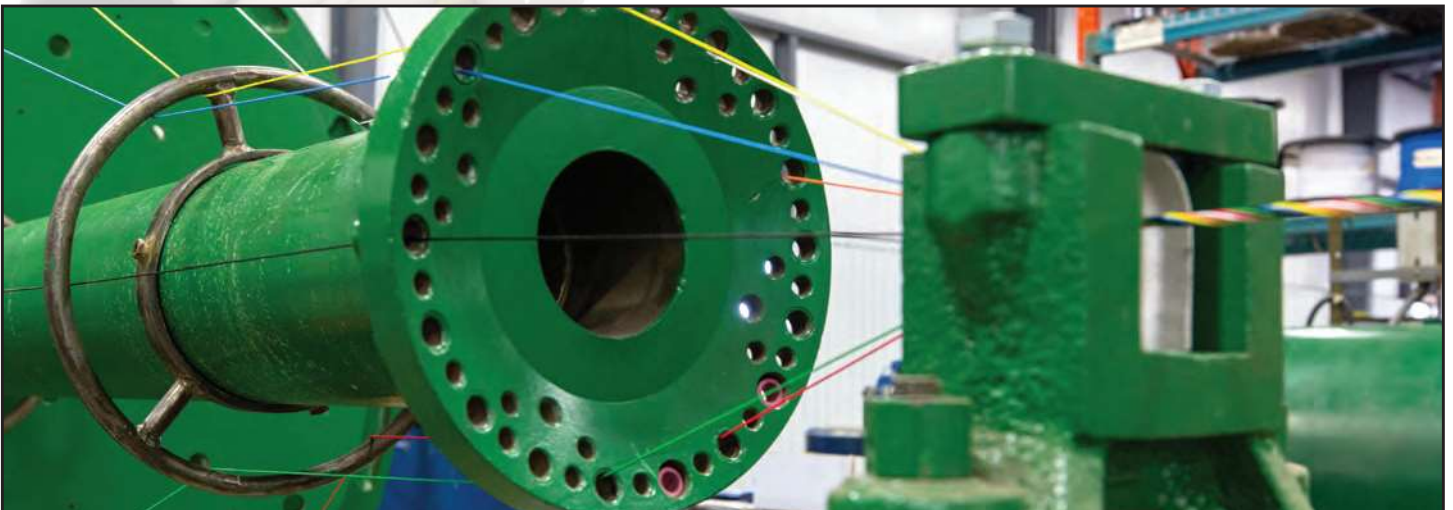
**Inches — Dimensions Are Nominal

See Color Chart #1 INSIDE BACK COVER

Tinned Soft Copper - PP Insulation - PVC Jacket - Black

Options Available:

- Special Retracted Lengths — 240" maximum on most constructions — 100 ft extended maximum
- Special Tangent Leads



203.498.2932 phone | 203.498.1602 fax | specialtywire.com web

COMMUNICATION/ELECTRONIC CORDS - PVC - 23 Gauge - Spiral Shield (Made to Order) RoHS Compliant

Retracted Lengths 48", 36", 24", 12" Extended Lengths 1:5 Ratio 80deg C UL

Tinned copper spiral shielding forms an effective barrier to reduce interference in the (AF) audio frequency range and is less effective in the (RF) radio frequency range. For the best overall performance, use a combination of spiral shielding together with an aluminum foil shield.

P/N	Conds	Strand	Volts	AMP	Cable OD**	Coil OD**	Weight per cord (lbs)			
							12"	24"	36"	48"
23AWG 21/36TC BLACK PVC JACKET SHIELDED UL 2464 80deg C RoHS										
V232PS	2	21/36	300	1	0.19	0.6	0.21	0.35	0.52	0.69
V233PS	3	21/36	300	1	0.2	0.68	0.26	0.44	0.65	0.85
V234PS	4	21/36	300	1	0.22	0.73	0.3	0.49	0.71	0.92
V235PS	5	21/36	300	1	0.23	0.76	0.36	0.58	0.83	0.97
V236PS	6	21/36	300	1	0.24	0.79	0.39	0.6	0.89	1.25
V237PS	7	21/36	300	1	0.24	0.83	0.75	1.1	1.4	1.8
V238PS	8	21/36	300	1	0.26	0.875	0.8	0.9	1.6	2
V2310PS	10	21/36	300	1	0.3	1.2	0.85	1.1	1.8	2.3

**Inches — Dimensions Are Nominal

See Color Chart #1 INSIDE BACK COVER

Tinned Soft Copper - PP Insulation - PVC Jacket - Black

Options Available:

- Special Retracted Lengths and Tangent Leads
- Double shield of spiral and aluminum shield – Change Suffix Letters from PS to PAS
- Also Available with Foil Shield Plus Drain Wire



Same Day Shipping For In-Stock Orders Before 2 PM EST

COMMUNICATION/ELECTRONIC CORDS - TPE - 23 Gauge (In Stock) RoHS Compliant

Retracted Lengths 48", 36", 24", 12" Extended Lengths 1:5 Ratio 105deg C

Thermoplastic Elastomer (TPE) is a material with the look and feel of rubber making it highly suitable for use in retractable cords. It exhibits flexibility, toughness, with good high and low temperature operating characteristics, excellent resistance to water, alcohol and acids, and especially, outstanding electrical properties. They are well suited for usage in test instruments, medical equipment, barcode readers, hand-held computers, game machines, hand-held controllers, photographic equipment, industrial weighing equipment and other similar applications. Please call when there is a requirement for conductor counts other than those shown below.

P/N	Conds	Strand	Volts	AMP	Cable OD**	Coil OD**	Weight per cord (lbs)			
							12"	24"	36"	48"
23 AWG 21/36TC BLACK TPE JACKET 105deg C RoHS NON UL										
T232P	2	21/36	300	1	0.18	0.61	0.25	0.37	0.55	0.7
T233P	3	21/36	300	1	0.19	0.69	0.27	0.45	0.65	0.85
T234P	4	21/36	300	1	0.2	0.71	0.31	0.49	0.72	0.91
T235P	5	21/36	300	1	0.22	0.75	0.35	0.58	0.82	0.98
T236P	6	21/36	300	1	0.23	0.78	0.39	0.6	0.89	1.27
T237P	7	21/36	300	1	0.23	0.78	0.4	0.61	0.9	1.29
T238P	8	21/36	300	1	0.25	0.87	0.45	0.78	1.4	1.8
T2310P	10	21/36	300	1	0.28	0.99	0.59	1.03	1.6	2.4
T2312P	12	21/36	300	1	0.29	1.1	0.7	1.17	1.85	2.6
T2315P	15	21/36	300	1	0.32	1.3	0.83	1.4	2.15	2.8

**Inches — Dimensions Are Nominal

See Color Chart #1 INSIDE BACK COVER

Tinned Soft Copper - PP Insulation - TPE Jacket - Black Matte

Shield — Spiral and Foil Shield Available

Options Available:

- Special Retracted Lengths — 240" maximum on most constructions.
- Special Tangent Leads
- For wire in stock, lead time is 2-3 business days
- Stock is not UL — UL available upon special request

COMMUNICATION/ELECTRONIC CORDS - TPE - 23 Gauge - Foil Shield - (Made to Order) RoHS Compliant

Retracted Lengths 48", 36", 24", 12" Extended Lengths 1:5 Ratio 105deg C

These foil shielded coiled cables exhibit the same characteristics as shown at left but with the addition of aluminum foil shielding. This type of shielding forms an effective barrier to reduce or eliminate Electro Magnetic Interference (EMI) , Radio Frequency Interference (RFI) and Electro Static Discharge (ESD). Tinned copper served shields are also available and can be combined with foil shielding for even better performance.

P/N	Conds	Strand	Volts	AMP	Cable OD**	Coil OD**	Weight per cord (lbs)			
							12"	24"	36"	48"
23AWG 21/36TC BLACK TPE JACKET FOIL SHIELDED NON UL 105deg C RoHS										
T232PA	2	21/36	300	1	0.19	0.6	0.21	0.35	0.52	0.69
T233PA	3	21/36	300	1	0.2	0.68	0.26	0.44	0.65	0.85
T234PA	4	21/36	300	1	0.22	0.73	0.3	0.49	0.71	0.92
T235PA	5	21/36	300	1	0.23	0.76	0.36	0.58	0.83	0.97
T236PA	6	21/36	300	1	0.24	0.79	0.39	0.6	0.89	1.25
T237PA	7	21/36	300	1	0.24	0.83	0.75	1.1	1.4	1.8
T238PA	8	21/36	300	1	0.26	0.875	0.8	0.9	1.6	2
T2310PA	10	21/36	300	1	0.3	1.2	0.85	1.1	1.8	2.3

**Inches — Dimensions Are Nominal

See Color Chart #1 INSIDE BACK COVER

Tinned Soft Copper - PP Insulation - TPE Jacket - Black Matte

Aluminum Mylar Shield with Drain — 100% Coverage

Options Available:

- Tinned Copper Served Shield (Spiral Wrap) — 90% Coverage — Change Suffix Letters from PA to PS
- Double Shield of Aluminum Mylar Plus Spiral Wrap — Change Suffix Letters from PA to PAS
- Other Gauge Sizes and/or Strandings Available
- Special Retracted Lengths — 240" maximum on most constructions.
- Special Tangent Leads
- For wire in stock, lead time is 2-3 business days
- Stock is not UL — UL available upon special request



Same Day Shipping For In-Stock Orders Before 2 PM EST

COMMUNICATION/ELECTRONIC CORDS - TPU (FR-PU) - 23 Gauge (In Stock) RoHS Compliant

Retracted Lengths 48", 36", 24", 12" Extended Lengths 1:5 Ratio 60deg C UL

This group of **flame retardant cords** is recognized by UL as Appliance Wire Material Styles **20197** and **20318**. They offer a high degree of performance in severe duty applications and in cold environments. They are especially well suited for usage in test instruments, medical equipment, barcode readers, hand-held computers, game machines, hand-held controllers, headset communications ground to cockpit, photographic equipment and other similar applications. Similar performance is available with non-flame retardant non UL cords at reduced cost. Please call when there is a requirement for conductor counts other than those shown below.

P/N	Conds	Strand	Volts	AMP	Cable OD**	Coil OD**	Weight per cord (lbs)			
							12"	24"	36"	48"
23 AWG 21/36TC BLACK FR POLYURETHANE JACKET UL 20318 60deg C RoHS										
UF232P	2	21/36	300	1	0.18	0.61	0.25	0.37	0.55	0.7
UF233P	3	21/36	300	1	0.19	0.69	0.27	0.45	0.65	0.85
UF234P	4	21/36	300	1	0.2	0.71	0.31	0.49	0.72	0.91
UF235P	5	21/36	300	1	0.22	0.75	0.35	0.58	0.82	0.98
UF236P	6	21/36	300	1	0.23	0.78	0.39	0.6	0.89	1.27
UF237P	7	21/36	300	1	0.23	0.78	0.4	0.61	0.9	1.29
UF238P	8	21/36	300	1	0.25	0.87	0.45	0.78	1.4	1.8
UF2310P	10	21/36	300	1	0.28	0.99	0.59	1.03	1.6	2.4
UF2312P	12	21/36	300	1	0.29	1.1	0.7	1.17	1.85	2.6
UF2315P	15	21/36	300	1	0.310	1.12	0.90	1.50	2.30	3.25
UF2320P	20	21/36	300	1	0.345	1.2	1.17	1.95	3.10	4.35

**Inches — Dimensions Are Nominal

See Color Chart #1 INSIDE BACK COVER

Tinned Soft Copper - PP Insulation - FR-PU Jacket - Black Matte

Options Available:

- Special Retracted Lengths – 240" maximum on most constructions.
- Glossy PU Jacket – Non UL – Change the prefix letter from UF to U
- Special Retracted Lengths and Tangent Leads
- For wire in stock, lead time is 2-3 business days

COMMUNICATION/ELECTRONIC CORDS - TPU (FR-PU) -23 Gauge - Foil Shield - (Wire In Stock) RoHS Compliant

Retracted Lengths 48", 36", 24", 12" Extended Lengths 1:5 Ratio 60deg C UL

These foil shielded coiled cables exhibit the same characteristics as shown at left but with the addition of aluminum foil shielding. This type of shielding forms an effective barrier to reduce or eliminate Electro Magnetic Interference (EMI) , Radio Frequency Interference (RFI) and Electro Static Discharge (ESD). Tinned copper served shields are also available and can be combined with foil shielding for even better performance.

P/N	Conds	Strand	Volts	AMP	Cable OD**	Coil OD**	Weight per cord (lbs)			
							12"	24"	36"	48"
23AWG 21/36TC FR POLYURETHANE JACKET SHIELDED UL 20318 60deg C RoHS										
UF232PA	2	21/36	300	1	0.19	0.6	0.21	0.35	0.52	0.69
UF233PA	3	21/36	300	1	0.2	0.68	0.26	0.44	0.65	0.85
UF234PA	4	21/36	300	1	0.22	0.73	0.3	0.49	0.71	0.92
UF235PA	5	21/36	300	1	0.23	0.76	0.36	0.58	0.83	0.97
UF236PA	6	21/36	300	1	0.24	0.79	0.39	0.6	0.89	1.25
UF237PA	7	21/36	300	1	0.24	0.83	0.75	1.1	1.4	1.8
UF238PA	8	21/36	300	1	0.26	0.875	0.8	0.9	1.6	2
UF2310PA	10	21/36	300	1	0.285	1	0.85	1.1	1.8	2.3
UF2315PA	15	21/36	300	1	0.315	1.12	0.90	1.5	2.30	3.25
UF2320PA	20	21/36	300	1	0.350	1.20	1.17	1.95	3.10	4.35

**Inches — Dimensions Are Nominal

See Color Chart #1 INSIDE BACK COVER

Tinned Soft Copper - PP Insulation - FR-PU Jacket - Black Matte

Aluminum Mylar Shield with Drain – 100% Coverage

Options Available:

- Glossy PU Jacket – Non UL – Change the prefix letter from UF to U
- Tinned Copper Served Shield (Spiral Wrap) – 90% Coverage – Change Suffix Letters from PA to PS
- Double Shield of Aluminum Mylar Plus Spiral Wrap – Change Suffix Letters from PA to PAS
- Other Gauge Sizes and/or Strandings Available
- Special Retracted Lengths and Tangent Leads
- For wire in stock, lead time is 2-3 business days



Same Day Shipping For In-Stock Orders Before 2 PM EST

MINIATURE CORDS - PVC - 28 Gauge (Wire In Stock) RoHS Compliant

Retracted Lengths 48", 36", 24", 12" Extended Lengths 1:5 Ratio 80deg C UL

Miniature coiled cable are versatile performers where power consumption is minimal combined with the need for light weight and flexibility. Please call when there is a requirement for conductor counts other than those shown below

P/N	Conds	Strand	Volts	AMP	Cable OD**	Coil OD**		Weight per cord (lbs)		
						12"	24"	36"	48"	
28AWG 7/36TC PVC JACKET UL 2464 80C RoHS										
V282P	2	7/36	300	1	0.15	0.55	0.16	0.3	0.42	0.58
V283P	3	7/36	300	1	0.16	0.57	0.17	0.31	0.44	0.62
V284P	4	7/36	300	1	0.17	0.58	0.19	0.35	0.47	0.67
V285P	5	7/36	300	1	0.18	0.6	0.22	0.39	0.55	0.76
V286P	6	7/36	300	1	0.19	0.61	0.23	0.42	0.6	0.83
V287P	7	7/36	300	1	0.19	0.61	0.24	0.43	0.6	0.83
V288P	8	7/36	300	1	0.21	0.75	0.27	0.49	0.7	0.93
V2810P	10	7/36	300	1	0.22	0.755	0.31	0.56	0.81	1.12
V2812P	12	7/36	300	1	0.23	0.79	0.33	0.6	0.86	1.2
V2815P	15	7/36	300	1	0.25	0.875	0.35	0.63	0.91	1.26

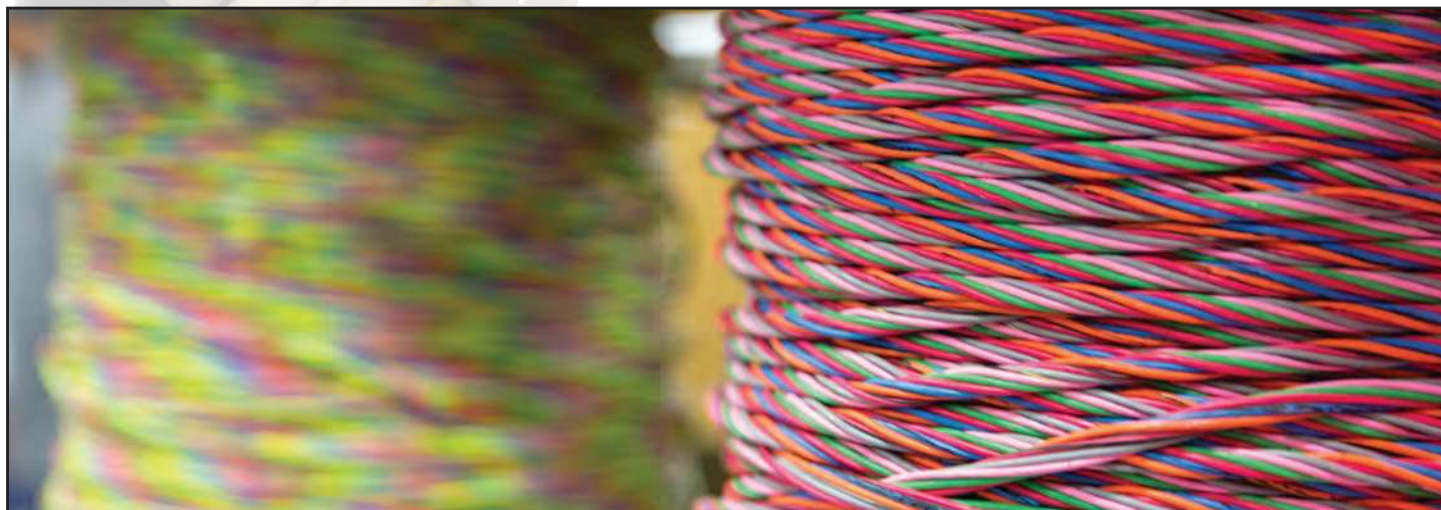
**Inches — Dimensions Are Nominal

See Color Chart #1 INSIDE BACK COVER

Tinned Soft Copper - PP Insulation - PVC Jacket - Black

Options Available:

- Glossy PU Jacket – Non UL – Change the P/N from V to U
- FR-PU Jacket – UL – Change the P/N from V to UF
- Other Gauge Sizes And/Or Strandings available
- For wire in stock, lead time is 2-3 business days



203.498.2932 phone | 203.498.1602 fax | specialtywire.com web

MINIATURE CORDS - PVC - 28 GAUGE - Foil Shield - (Made to Order) RoHS Compliant

Retracted Lengths 48", 36", 24", 12" Extended Lengths 1:5 Ratio 80deg C UL

Aluminum foil shields with 100% coverage form an effective barrier to reduce or eliminate Electro Magnetic Interference (EMI) or Radio Frequency Interference (RFI) or Electro Static Discharge (ESD). Tinned copper served shields are also available and can be combined with foil shields for even better performance. Please call when there is a requirement for conductor counts other than those shown below.

P/N	Conds	Strand	Volts	AMP	Cable OD**	Coil OD**		Weight per cord (lbs)		
						12"	24"	36"	48"	
28AWG 7/36TC PVC JACKET FOIL SHIELDED UL 2464 80C RoHS										
V282PA	2	7/36	300	1	0.16	0.57	0.17	0.31	0.44	0.61
V283PA	3	7/36	300	1	0.17	0.59	0.19	0.34	0.5	0.68
V284PA	4	7/36	300	1	0.18	0.6	0.2	0.36	0.52	0.72
V285PA	5	7/36	300	1	0.19	0.61	0.23	0.42	0.6	0.83
V286PA	6	7/36	300	1	0.2	0.63	0.25	0.45	0.65	0.9
V287PA	7	7/36	300	1	0.2	0.65	0.26	0.47	0.68	0.94
V288PA	8	7/36	300	1	0.22	0.75	0.29	0.52	0.75	1.04
V2810PA	10	7/36	300	1	0.23	0.78	0.32	0.58	0.83	1.15
V2812PA	12	7/36	300	1	0.24	0.82	0.34	0.61	0.88	1.22

**Inches — Dimensions Are Nominal

See Color Chart #1 INSIDE BACK COVER

Tinned Soft Copper - PP Insulation - PVC Jacket - Black

Aluminum Mylar Shield With Drain — 100% Coverage

Options Available:

- Glossy PU Jacket — Non UL — Change the P/N from V to U
- FR-PU Jacket — UL — Change the P/N from V to UF
- Other Gauge Sizes And/Or Strandings available
- Tinned Copper Served Shield — 90% Coverage — Change Suffix letters from PA to PS
- For wire in stock, lead time is 2-3 business days



Same Day Shipping For In-Stock Orders Before 2 PM EST

MINIATURE CORDS - TPE - 28 Gauge (Made to Order) RoHS Compliant

Retracted Lengths 48", 36", 24", 12" Extended Lengths 1:5 Ratio 105deg C Non-UL

Miniature coiled cable are versatile performers where power consumption is minimal combined with the need for light weight and flexibility. Please call when there is a requirement for conductor counts other than those shown below.

P/N	Conds	Strand	Volts	AMP	Cable OD**	Coil OD**		Weight per cord (lbs)		
						12"	24"	36"	48"	
28AWG 7/36TCTPE JACKET NON UL 105C RoHS										
T282P	2	7/36	300	1	0.15	0.55	0.16	0.3	0.42	0.58
T283P	3	7/36	300	1	0.16	0.57	0.17	0.31	0.44	0.62
T284P	4	7/36	300	1	0.17	0.58	0.19	0.35	0.47	0.67
T285P	5	7/36	300	1	0.18	0.6	0.22	0.39	0.55	0.76
T286P	6	7/36	300	1	0.19	0.61	0.23	0.42	0.6	0.83
T287P	7	7/36	300	1	0.19	0.61	0.24	0.43	0.6	0.83
T288P	8	7/36	300	1	0.21	0.73	0.27	0.49	0.7	0.93
T2810P	10	7/36	300	1	0.22	0.755	0.31	0.56	0.81	1.12
T2812P	12	7/36	300	1	0.23	0.79	0.33	0.6	0.86	1.2
T2815P	15	7/36	300	1	0.25	0.875	0.35	0.63	0.91	1.26

Tinned Soft Copper - PP Insulation - TPE Jacket — Black Matte

Options Available:

- Other Gauge Sizes And/Or Strandings available
- For wire in stock, lead time is 2-3 business days

MINIATURE CORDS - TPE 28 Gauge - Foil Shield - (Made to Order) RoHS Compliant

Retracted Lengths 48", 36", 24", 12" Extended Lengths 1:5 Ratio 105deg C Non-UL

P/N	Conds	Strand	Volts	AMP	Cable OD**	Coil OD**		Weight per cord (lbs)		
						12"	24"	36"	48"	
28AWG 7/36TC TPE JACKET FOIL SHIELDED NON UL 105C RoHS										
T282PA	2	7/36	300	1	0.16	0.57	0.17	0.31	0.44	0.61
T283PA	3	7/36	300	1	0.17	0.59	0.19	0.34	0.5	0.68
T284PA	4	7/36	300	1	0.18	0.6	0.2	0.36	0.52	0.72
T285PA	5	7/36	300	1	0.19	0.61	0.23	0.42	0.6	0.83
T286PA	6	7/36	300	1	0.2	0.63	0.25	0.45	0.65	0.9
T287PA	7	7/36	300	1	0.2	0.65	0.26	0.47	0.68	0.94
T288PA	8	7/36	300	1	0.22	0.75	0.29	0.52	0.75	1.04
T2810PA	10	7/36	300	1	0.23	0.78	0.32	0.58	0.83	1.15
T2812PA	12	7/36	300	1	0.24	0.82	0.34	0.61	0.88	1.22

Tinned Soft Copper - PP Insulation - TPE Jacket — Black Matte

Aluminum Mylar Shield With Drain — 100% Coverage

Options Available:

- Tinned Copper Served Shield — 90% Coverage — Change Suffix letters from PA to PS
- Other Gauge Sizes And/Or Strandings available

203.498.2932 phone | 203.498.1602 fax | specialtywire.com web

**Inches — Dimensions Are Nominal

See Color Chart #1 INSIDE BACK COVER

MINIATURE CORDS - TPU (FR-PU) - 26 Gauge (Wire In Stock) RoHS Compliant

Retracted Lengths 48", 36", 24", 12" Extended Lengths 1:5 Ratio 60deg C UL

Miniature coiled cable are versatile performers where power consumption is minimal combined with the need for light weight and flexibility. Please call when there is a requirement for conductor counts other than those shown below.

P/N	Conds	Strand	Volts	AMP	Cable OD**	Coil OD**		Weight per cord (lbs)		
						12"	24"	36"	48"	
26AWG 7/34TC FR POLYURETHANE JACKET UL 20318 60C RoHS										
UF262P	2	7/34	300	1	0.14	0.55	0.18	0.33	0.47	0.65
UF263P	3	7/34	300	1	0.15	0.57	0.2	0.36	0.52	0.72
UF264P	4	7/34	300	1	0.16	0.58	0.22	0.4	0.57	0.79
UF265P	5	7/34	300	1	0.17	0.6	0.24	0.43	0.62	0.86
UF266P	6	7/34	300	1	0.18	0.61	0.27	0.49	0.7	0.97
UF267P	7	7/34	300	1	0.18	0.61	0.28	0.51	0.73	1.01
UF268P	8	7/34	300	1	0.19	0.73	0.3	0.54	0.78	1.08
UF2610P	10	7/34	300	1	0.2	0.755	0.34	0.61	0.88	1.22
UF2612P	12	7/34	300	1	0.22	0.79	0.37	0.67	0.97	1.33
UF2615P	15	7/34	300	1	0.24	0.875	0.43	0.77	1.12	1.55

Tinned Soft Copper - PP Insulation - FR PU Jacket - Black Matte

Options Available:

- Glossy PU Jacket — Non UL — Change the P/N from UF to U
- PVC Jacket — UL — Change the P/N from UF to V
- Other Gauge Sizes And/Or Strandings available
- For wire in stock, lead time is 2-3 business days

MINIATURE CORDS - TPU (FR-PU) - 26 Gauge - Foil Shield - (Wire In Stock) RoHS Compliant

Retracted Lengths 48", 36", 24", 12" Extended Lengths 1:5 Ratio 60deg C UL

P/N	Conds	Strand	Volts	AMP	Cable OD**	Coil OD**		Weight per cord (lbs)		
						12"	24"	36"	48"	
26AWG 7/34TC FR POLYURETHANE JACKET FOIL SHIELDED UL 20318 60C RoHS										
UF262PA	2	7/34	300	1	0.15	0.57	0.19	0.34	0.49	0.68
UF263PA	3	7/34	300	1	0.16	0.59	0.21	0.37	0.54	0.75
UF264PA	4	7/34	300	1	0.17	0.62	0.23	0.41	0.59	0.82
UF265PA	5	7/34	300	1	0.18	0.65	0.25	0.44	0.64	0.89
UF266PA	6	7/34	300	1	0.2	0.68	0.28	0.5	0.72	1.01
UF267PA	7	7/34	300	1	0.2	0.68	0.29	0.52	0.75	1.04
UF268PA	8	7/34	300	1	0.21	0.7	0.31	0.55	0.81	1.12
UF2610PA	10	7/34	300	1	0.22	0.9	0.35	0.62	0.91	1.25

Tinned Soft Copper - PP Insulated - FR Polyurethane Jacket — Black Matte

Aluminum Mylar Shield With Drain — 100% Coverage

Options Available:

- Glossy PU Jacket — Non UL — Change the P/N from UF to U
- PVC Jacket — UL — Change the P/N from UF to V
- Tinned Copper Served Shield — 90% Coverage — Change Suffix letters from PA to PS
- Other Gauge Sizes And/Or Strandings available
- For wire in stock, lead time is 2-3 business days

Same Day Shipping For In-Stock Orders Before 2 PM EST

**Inches — Dimensions Are Nominal

See Color Chart #1 INSIDE BACK COVER

Ordering

How to Order Retractable Cords

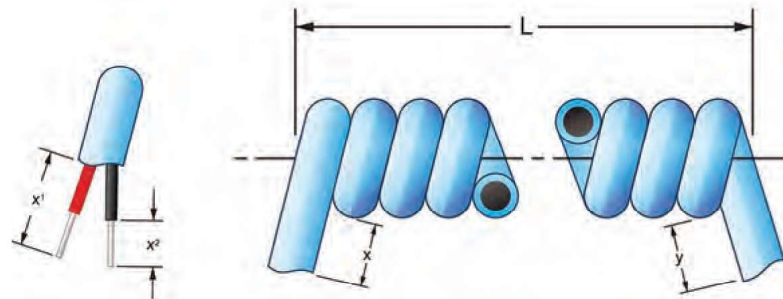
Retractable cords are a safe and convenient way to store longer lengths of cable in a compact coiled form. Due to their unique design, these cords can be extended to their maximum length, usually about five times their original retracted length. When released, these cords then self return or spring back to their original compact length. Coiled cords, retractable cords or curly cords are alternate terms used.

The following will enable us to provide you with the exact type of retractile cord or cable you require:

- Product application
- Voltage/Amperage rating of equipment
- Number of conductors required and colors
- Gauge size
- Insulation preferred: Polypropylene (PP), Polyvinyl Chloride (PVC), Ethylene Propylene Rubber (EPR), Hytrel
- Shielding, type, capacitance
- Jacket preferred:
 - Polyvinyl Chloride (PVC)
 - Polyurethane (PU) or Flame-Retarded Polyurethane (FR-PU)
 - Thermoplastic Elastomer/Rubber (TPR/TPE)
 - Hytrel
 - Thermoset Rubber — Available only on 18 or larger AWG sizes
- Quantities required
- Is current sample available?

See Sketch below for additional information.

- “L” dimension — retracted. Use 1:5 ratio for extended length.
- Provide following dimensions where applicable.
 - X and Y Length of leads. Specify if natural or axial style required.
 - X1 and/or Y1 — amount of jacket removal required.
 - X2 and/or y2 — length of insulation to be removed.
 - Specify if terminals, twisting and/or tinning required.



CALL FOR QUANTITY DISCOUNT.

Specialty Wire & Cord Sets...

We strive to give our customers the best product for their money. Our customers often acknowledge how great it is to work with SWC. Our staff is very knowledgeable, friendly and helpful. We have many years experience in the wire industry, and coiled cords (also known as curly cords), in particular. Each customer receives prompt response and quotes are usually provided in one business day. SWC stocks many cords which can be shipped same day. Our retractable cords range from one inch to 20 feet with a maximum extension of 100 feet. Most of our wire is UL approved and CSA certified, and all of our wire is RoHS compliant.



COLOR CHART #1

Conductors	Color	Stripe Color
1	BLACK	—
2	WHITE	—
3	RED	—
4	GREEN	—
5	ORANGE	—
6	BLUE	—
7	YELLOW	—
8	BROWN	—
9	GRAY	—
10	PINK	—
11	VIOLET	—
12	TAN	—
13	WHITE	BLACK
14	RED	BLACK
15	GREEN	BLACK
16	ORANGE	BLACK
17	BLUE	BLACK
18	BLACK	WHITE
19	RED	WHITE
20	GREEN	WHITE

COLOR CHART #2

Conductors	Color	Stripe Color
1	BLACK	—
2	WHITE	—
3	GREEN	—
4	RED	—
5	ORANGE	—
6	BLUE	—
7	WHITE	BLACK
8	RED	BLACK
9	GREEN	BLACK
10	ORANGE	BLACK
11	BLUE	BLACK
12	BLACK	WHITE
13	RED	WHITE
14	GREEN	WHITE
15	BLUE	WHITE



SWC
SPECIALTY WIRE
AND CORD SETS

ONE
GALLAGHER ROAD



Specialty Wire is a 100% Solar Powered Manufacturer

Specialty Wire & Cord Sets Inc.

*Your reliable supplier of retractile cords, custom made wire and cable products.
Call today for a live quote: 203.498.2932!*

One Gallagher Rd. | Hamden CT 06517
203.498.2932 phone | 203.498.1602 fax
specialtywire.com web